



迈格码培训学院手册2023

SIGMASOFT®

MAGMAacademy CATALOGUE — SIGMASOFT®

MAGMA
ACADEMY
STEPS



TRAININGS



WORKSHOPS



SEMINARS

目录

迈格码培训学院	5
SIGMASOFT® 应用服务	7
SIGMASOFT® 六步法	9
培训课	10
操作培训	12
工艺辅导	14
实战辅导	16
升级培训	18
讲习班	21
SIGMASOFT® 软件体验	22
应力模块辅导	22
虚拟试验设计和自主优化	22
研讨会	26
产品的持续改进及模拟优化	26
客户定制课程	28
培训年历	30
地址和联系方式	32

Content

MAGMAacademy	6
SIGMASOFT® Implementation	8
SIGMASOFT® CONCEPT	9
Trainings	11
Operation Training	13
Process Coaching	15
On-job Project Coaching	17
Upgrade Training	19
Workshops	21
Introduction and Experience of SIGMASOFT®	23
Stress Module Coaching	23
Virtual Design of Experiments and Optimization	23
Seminars	27
Improvement and Simulation Optimization of Parts	27
Customized Courses	29
Course Calendar	30
Address & Contact	32



培训课

讲习班

研讨会



MAGMA

Commitment to Customer Excellence

迈 (苏州) 软件有限公司
Magma Engineering (Suzhou)

迈格码培训学院

迈格码培训学院旨在为SIGMASOFT®客户提供各种注射成型工艺优化的教育课程，并为注射成型专家提供一个知识交流的重要平台。

其课程涉及SIGMASOFT®软件培训，模拟技术讲习班以及各类主题研讨会。通过这些课程，软件使用者可以进一步了解如何有效应用注射成型工艺模拟—学习如何正确的分析结果，从而降低各类成本，提高产品质量。

迈格码培训学院不仅对SIGMASOFT®的主要使用者提供系统的培训和辅导，甚至为整个注射成型行业的相关人员提供丰富的教育资源，从而致力于加强注射成型工艺的全面整合。

培训课：全面注射成型模拟软件培训课程分为3级：操作培训，工艺辅导和实战辅导。操作培训主要以软件操作为主。工艺辅导和实战辅导将深入到相应模块的成型工艺知识以及客户项目的实战辅导。此培训及辅导将指导用户如何通过模拟优化工艺参数及设计，掌握模拟方法及影响，分析产品缺陷，模拟结果等。

讲习班：通过讲习班的沟通和交流，可以更加深入地了解SIGMASOFT®。此活动是特为感兴趣的SIGMASOFT®用户而设的，目的是进一步优化用户的模拟知识、技巧以及分析方法。每个讲习班根据用户具体需求而设定特定主题，以便提供有针对性的模拟技巧来帮助分析注射成型问题。

研讨会：专注于SIGMASOFT®软件功能在各种注射成型工艺中的实际应用，结合案例分析与模拟结果分析和解读，明确产品缺陷形成的根本原因，优化设计、工艺及生产，进而降低成本，提升产品质量。

我们期待您参加迈格码培训学院的教育课程。
欲知详情，请至官网查询或联系您的客户经理。

Welcome to MAGMAacademy

The MAGMAacademy training center provides various educational offers dedicated to optimization of part processes or part designs and is a platform to share knowledge between experts. MAGMAacademy organizes all trainings, ongoing learning classes for customers related to SIGMASOFT®, as well as technical workshops and seminars. During these courses you will extend your knowledge about the efficient use of part process simulation. You will learn how to interpret results correctly, reduce costs, and increase the quality of your parts.

MAGMAacademy's mission is to provide educational resources to software users and to aid assist in the integration of part process simulation throughout your entire organization.

Training: Start with an Operation Training and then take on the specific Process Coaching and On-job Project Coaching. Using practical examples, you will learn about processes and materials with the focus on your application.

Workshop: Deepen your knowledge of SIGMASOFT® in one of our workshops. The workshops are specifically designed for users, who are experienced in working with SIGMASOFT® and want to improve their usage skills. Each workshop covers a particular topic and is designed to offer you assistance in tackling your part application problems. You will learn how to increase your efficiency by using SIGMASOFT® for various areas!

Seminar: Focus on the practical application of SIGMASOFT® in various injection molding processes, combined with case analysis and simulation results analysis and interpretation, clarify the root causes of product defects, optimize design, process, and production, so as to reduce costs and improve product quality.

We look forward to welcoming you at one of our educational offerings in our MAGMAacademy center in Suzhou.

For further details please search on SIGMASOFT® official website or contact your SIGMASOFT® contact person.



SIGMASOFT® 应用服务

你我一起，奔驰在赛道上—为了质量，利润，时间和竞争力！

成功不仅仅是使用模拟。应用服务意味着与SIGMASOFT®一起制定新的目标，并共同有效地实现这些目标。

SIGMASOFT®不仅仅是一款软件，它更是一种方法，旨在帮助贵公司优化生产工艺、增强有效沟通和提高盈利能力。SIGMASOFT®将担任您的“副驾驶员”，为您提供来自迈格码培训学院和应用工程专家的专业支持。

甚至在您正式使用SIGMASOFT®之前，我们就已开始与您共同制定“路线图”—根据贵公司的实际情况，与您共同探讨如何安全高效的使用SIGMASOFT®。作为客户，您受益于软件使用者的正规培训和认证；受益于相关员工通过讲习班和研讨会得到的教育与提升；更受益于为公司各领域安全实施措施确定共同目标。

无论您是SIGMASOFT®的新客户还是长期用户，我们都会帮您定制专属应用服务！



SIGMASOFT® Implementation

Together, we are in a race... for quality, profitability, time and competitiveness!

Success is more than just using simulation. Implementation means setting new goals with SIGMASOFT® and achieving them efficiently together.

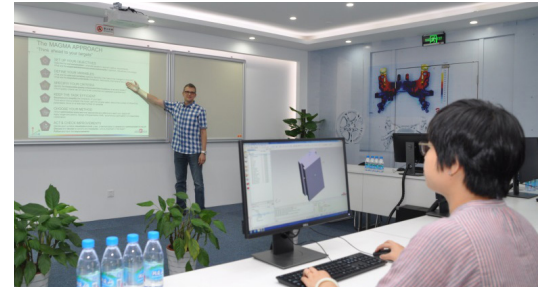
SIGMASOFT® is not just software. It is a methodology for optimizing injection process, part design, communication, and profitability in your company. SIGMASOFT® will act as a “co-pilot” and offer you a professional support from our MAGMAacademy and our application engineering experts.

Even before you start using the software we will take the time to discuss with you the “roadmap” – the most important factors for an effective and safe use of SIGMASOFT® based on your situation. As a customer, you benefit from the right training and certification of the users, the qualification of all employees through tailor-made workshops/seminars, the joint definition of goals to the safe implementation of measures for all areas in the company.

Whether you are a new customer or a long-time user of our software – we have something planned for you!

SIGMASOFT® 六步法 SIGMASOFT® CONCEPT

“你的目标是什么？” “Think ahead to your targets”



设立目标 SET UP YOUR OBJECTIVES

Describe the **current situation** - what are issues to resolve? (status, requirements)
What are the **expected/desired outcomes and benefits?** (optimum, robustness, knowledge)



定义变量 DEFINE YOUR VARIABLES

What are the **relevant variables** (options, flexibility) that need to be changed or analyzed?
What are the **important constraints** (limitations, restrictions) that have to be considered?



明确标准 SPECIFY YOUR CRITERIA

Identify the **measurable quality criteria and their locations** (evaluation areas)?
Which quality criteria can (or have to be) combined and assessed quantitatively?



提高效率 KEEP THE TASK EFFICIENT

Structure and **simplify** the complexity of your task! Think about how to simplify the model, split into smaller tasks, reduce the number of influencing parameters, focus on a restricted number of variables.



选定方法 CHOOSE YOUR METHOD

Which **optimization tools** are most appropriate and effective to reach your objective? Apply single simulations, Design of Experiments (DoE), autonomous optimization or a reasonable combination.



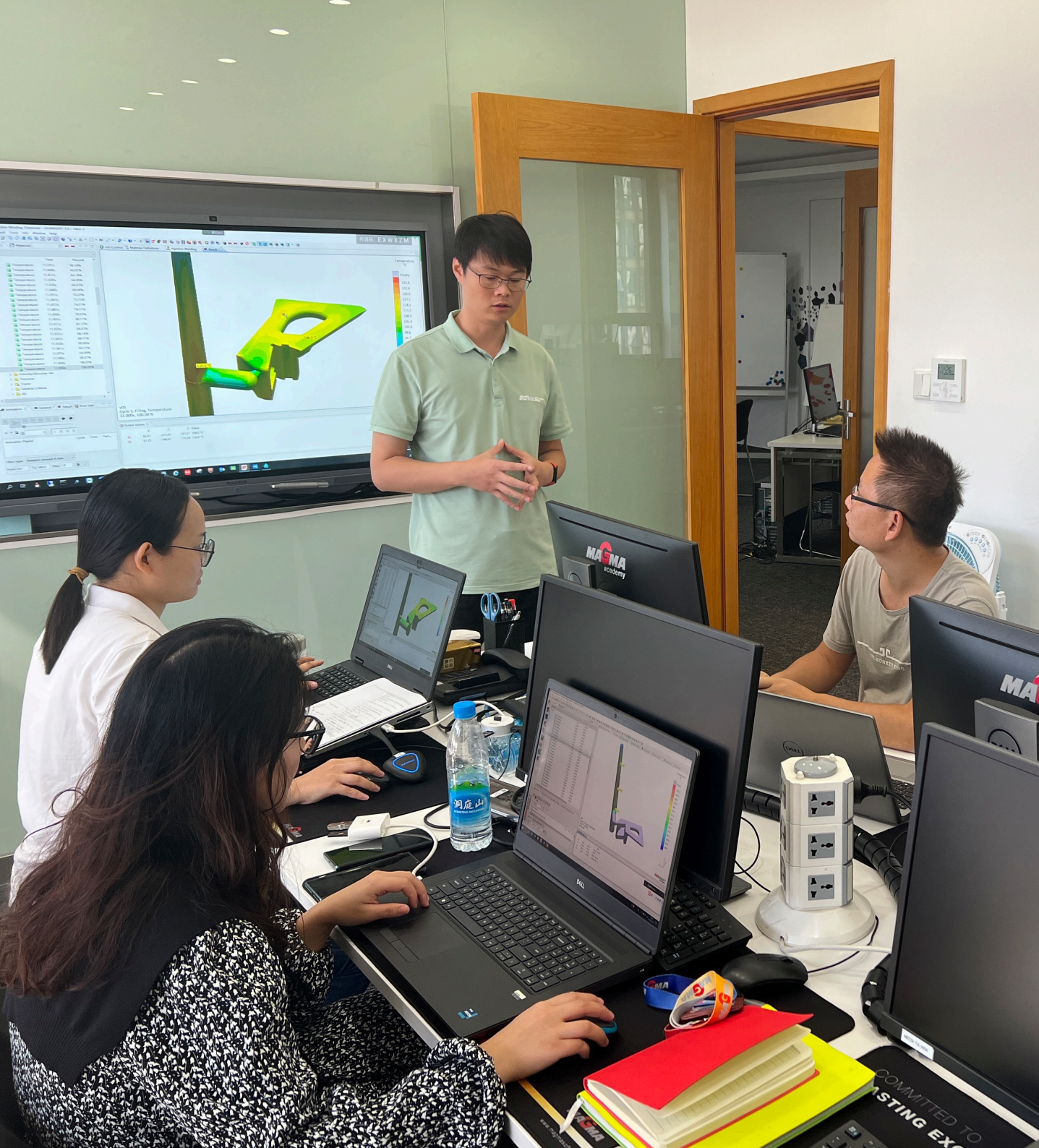
持续提升 ACT & CHECK IMPROVEMENTS

Decide upon suitable **visualization tools** (clear, understandable) to assess and communicate the results!

Discuss and **decide** for actions and **measures** – who is important in that team?
Follow and track the **improvements!**



培训课
TRAININGS





操作培训

条件: 无

级别: 初级

为期: 3天

费用: 1. 2700€+6%VAT (最多3人)

2. 免费 (在有效维保期内用户)

课程介绍:

操作培训是专为初级水平或零基础的主要使用者以及第二批新的主要使用者而设置的, 内容主要包括 SIGMASOFT® 六步法的介绍及应用, 操作设定以及虚拟试验设计和优化的初级应用。

课程大纲:

- 模拟介绍及 SIGMASOFT® 六步法
- 几何界面—练习 #1
- 网格界面—练习 #2
- 定义界面—练习 #3
- 优化界面—练习 #4
- 模拟界面—练习 #5
- 评估界面—练习 #6
- 结果界面—练习 #7

课程目标:

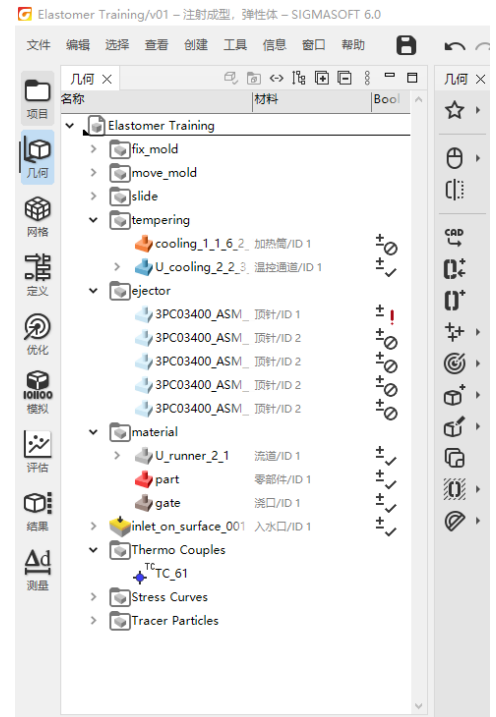
- 主要使用者会设定并模拟项目, 会对模拟结果进行初步的分析

参加对象:

- SIGMASOFT® 用户 (优先)
- 工程师, 设计师, 技术员等注射成型的工作人员

培训地点:

- 迈格码 (苏州) 软件科技有限公司 培训学院



Operation Training

Prerequisites: None

Course Level: Basic

Duration : 3 days

Course Fee : 1. 2700€+6%VAT(for up to 3 participants)
2. Included in a valid Maintenance and Support Agreement

About the course:

The Operation Training course is intended for beginner level main users or additional new users. The course curriculum includes the SIGMASOFT® CONCEPT, the manipulation and set-up of projects as well as basic definition of optimizations and their assessment.

Course Overview :

- Introduction of simulation and SIGMASOFT® CONCEPT
- Geometry Perspective - Lab #1
- Enmeshment Perspective - Lab #2
- Definition Perspective - Lab #3
- Optimization Perspective - Lab #4
- Simulation Perspective - Lab #5
- Assessment Perspective - Lab #6
- Result Perspective - Lab #7

By the end of this session the main user should be able to :

- Set up a project, start a simulation and analyze results

Who should attend:

- SIGMASOFT® users (Priority)
- Engineers, designers, technicians and other injection molding related personnel

Location:

- MAGMA Engineering (Suzhou) Co., Ltd MAGMAacademy



工艺辅导

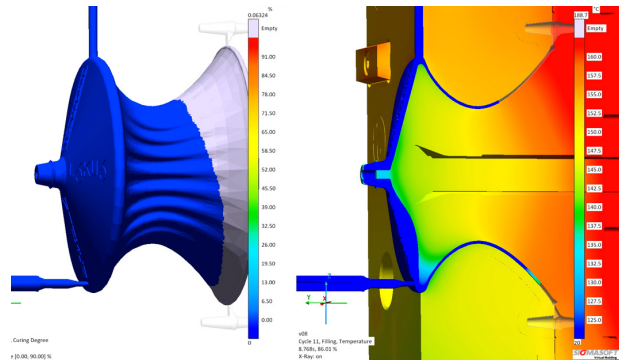
- 条件:** 操作培训
级别: 中级
为期: 3天
费用: 1. 4500€+6%VAT (最多3人)
2. 免费 (在有效维保期内用户)

课程介绍:

工艺辅导课程是继操作培训之后的必修课程，其在操作培训之上增加更多完成模拟的有效方法。主要使用者在参加此课程之前必须完成至少3个模拟项目。由于实际注射成型现场的具体情况错综复杂，主要使用者在做模拟时可能会遇到操作培训不能解决的问题，而工艺辅导课程则为他们提供了一个讨论问题解决方法的机会，且更多讲解模拟结果的含义，结合多个结果分析产品缺陷以及高级设定技巧。

课程大纲:

- 审查用户项目
- 高级网格划分技巧
- 深入分析模拟结果
 - 充型
 - 凝固 / 硫化
 - 应力 (如有)
- 创建模拟报告
- 注射成型工艺在模拟中的应用
- DoE & 自主优化
- 练习



课程目标:

- 主要使用者会设定并模拟项目，会对模拟结果进行有效的分析

参加对象:

- SIGMASOFT® 用户 (优先)
- 工程师，设计师，技术员等注射成型的工作人员

培训地点:

- 迈格码 (苏州) 软件科技有限公司 培训学院

Process Coaching

Prerequisites: Operation Training

Course Level: Intermediate

Duration : 3 days

Course Fee : 1. 4500€+6%VAT(for up to 3 participants)
2. Included in a valid Maintenance and Support Agreement

About the course:

The Process Coaching course is a mandatory follow-up to the Operation Training course and contains additional information necessary for the completion of the Operation Training program. The main users must complete at least 3 simulation projects before they are eligible to attend a Process Coaching. After working with the software in a real-world environment, main users may have encountered situations which were not addressed during the Operation Training course. The Process Coaching course allows main users the opportunity to discuss any problems they may have encountered. The Process Coaching program will provide greater insight into result meaning, combining results for better understanding, discussion of defect identification using results, and advanced set-up techniques.

Course Overview :

- Review users' projects
- Advance modelling technique and criterion
- In-depth analysis into simulation results
 - Filling
 - Solidification / Curing
 - Stress (if available)
- Simulation report guideline
- Process knowledge to simulation applications
- DoE & optimization
- Labs

By the end of this session the main user should be able to :

- Efficiently set up projects, evaluate simulation results

Who should attend:

- SIGMASOFT® users (Priority)
- Engineers, designers, technicians and other injection molding related personnel

Location:

- MAGMA Engineering (Suzhou) Co., Ltd MAGMAacademy



实战辅导

条件: 操作培训和工艺辅导, 并自操作培训起半年内完成

级别: 高级

为期: 3天

费用: 1. 4500€+6%VAT (最多3人)

2. 有效维保期内客户可享受折扣价

课程介绍:

实战辅导课程是由 SIGMASOFT® 专家和主要使用者共同完成客户的一个实际项目。SIGMASOFT® 专家会就结果评估方面给主要使用者提供建议和指导。由于时间关系, 多数项目是要延续至课堂之后继续完成的。

课程大纲:

- 审查用户项目
- 高级网格划分技巧
- 深入分析模拟结果
 - 充型
 - 凝固 / 硫化
 - 应力 (如有)
- 创建模拟报告
- 注射成型工艺在模拟中的应用
- 项目优化分析
- 练习

参加对象:

- SIGMASOFT® 用户 (优先)
- 工程师, 设计师, 技术员等注射成型的的工作人员

培训地点:

- 用户现场
- 迈格码 (苏州) 软件科技有限公司 培训学院

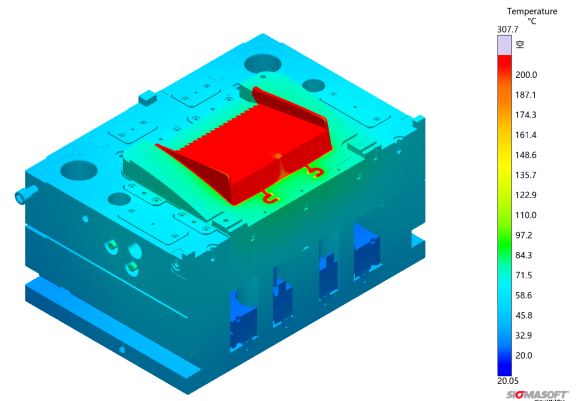
课程目标:

主要使用者会

- 解释缺陷的根源
- 寻求可行的解决方案
- 彻底实施该方案
- 创建模拟报告
- 有效的汇报演示模拟结果



Temperature
X 射线 on



On-job Project Coaching

Prerequisites: Operation Training and Process Coaching, must be completed within 6 months after attending the Operation Training

Course Level: Advanced

Duration : 3 days

Course Fee : 1. 4500€+6%VAT(for up to 3 participants)
2. Discounts available for customers having a valid Maintenance and Support Agreement

About the course:

The On-job Project Coaching course revolves around a main user's project which will be worked on in class with an experienced SIGMASOFT® application engineering expert. This course will help the main users assess the current project status, develop a strategic approach to the problem, and be provided with suggested result evaluation techniques. In most cases the scope of the project is beyond what can be completed in three days. Additionally, project work which begins in the Process Coaching course may continue after the course days are completed.

Course Overview :

- Review users' projects
- Advance modelling technique & criterion
- In-depth analysis into simulation results
 - Filling
 - Solidification / Curing
 - Stress (if available)
- Simulation report guideline
- Process knowledge to simulation applications
- Project optimization analysis
- Labs

By the end of this session the main user should be able to :

- Explain the root cause of a problem
- Determine a strategy to find an acceptable solution
- Implement the strategy
- Create simulation report
- Effectively communicate the results to others

Who should attend:

- SIGMASOFT® users (Priority)
- Engineers, designers, technicians and other injection molding related personnel

Location:

- On-site
- MAGMA Engineering (Suzhou) Co., Ltd MAGMAacademy



升级培训

条件: 操作培训

级别: 初级

为期: 1-2 天

费用: 免费 (在有效维保期内用户)

课程介绍:

新版升级培训仅在 SIGMASOFT® 版本有升级时举办。该课程涵盖所有新增功能的介绍和使用,借助相关实例的练习,主要使用者能够轻松快速的掌握新功能的使用,平稳过渡到新版本。对于使用 SIGMASOFT® 多个模块的主要使用者而言,该课程将结合讲解各模块功能。

课程大纲:

- SIGMASOFT® 新功能

课程目标:

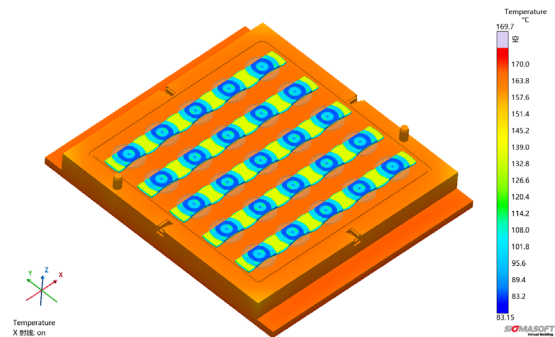
- 主要使用者会使用 SIGMASOFT® 新功能

参加对象:

- SIGMASOFT® 用户

培训地点:

- 迈格码 (苏州) 软件科技有限公司 培训学院



Upgrade Training

Prerequisites: Operation Training

Course Level: Basic

Duration : 1-2 days

Course Fee : Included in a valid Maintenance and Support Agreement

About the course:

The Upgrade Training is offered when a major software version change or upgrade occurs. Main users who attend an Upgrade Training will find it easier and faster to learn the new options and features available, facilitating a smooth transition to the new version. In cases where main users are utilizing multiple modules of SIGMASOFT®, efforts will be made to combine module functionality in one session.

Course Overview :

- New major features of SIGMASOFT®

By the end of this session the main user should be able to :

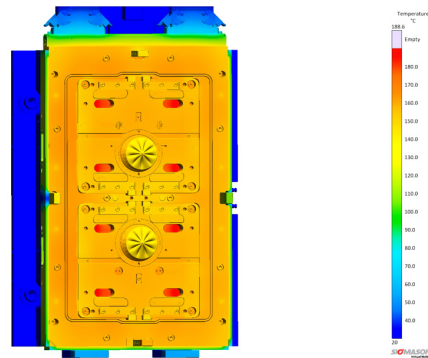
- Understand and use the newly introduced features of SIGMASOFT®

Who should attend:

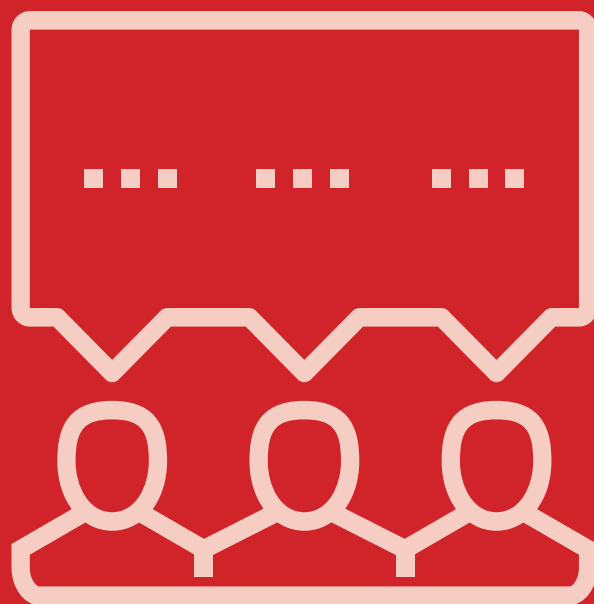
- SIGMASOFT® users

Location:

- MAGMA Engineering (Suzhou) Co., Ltd MAGMAacademy







讲习班
WORKSHOPS



讲习班

条件: 操作培训

级别: 中级

费用: 1. 1000RMB+6%VAT/人
2. 免费 (在有效维保期内用户)

主题: SIGMASOFT® 软件体验

日期: 3月24日 / 9月22日

课程介绍:

该讲习班特别为对 SIGMASOFT® 感兴趣的客户定制并开放。客户可以通过现场实际操作 SIGMASOFT®, 了解软件的操作界面, 网格的生成, 工艺参数的设定, 带入具体模拟项目, 解读模拟结果, 并运用 DoE 虚拟试验进行优化, 让客户一站式体验 SIGMASOFT® 的强大功能。

主题: 应力模块辅导

日期: 6月30日

课程介绍:

本次课程将着重介绍如何借助 SIGMASOFT® 应力模块进行预测与改善产品变形问题。SIGMASOFT® 技术专家将结合实际案例, 从接触应力, 顶出应力以及残余应力等多方面, 分析产品从开发设计到生产制造过程中可能面临的各种应力问题, 优化产品设计, 改善产品质量。

主题: 虚拟试验设计和优化

日期: 12月22日

课程介绍:

本课程将重点讲解 SIGMASOFT® 虚拟试验设计和自主优化的理论基础和实操方法, 结合实际案例的剖析, 让这一强大功能真正应用到实际。自主优化不仅是 SIGMASOFT® 注射成型技术的延续, 更是其与普通模拟软件区分开的一个突破性优势。

参加对象:

- SIGMASOFT® 用户 (优先)
- 工程师, 设计师, 技术员等注射成型的工作人员

Workshop

Prerequisites: Operation Training

Course Level: Intermediate

Course Fee : 1. 1000RMB+6%VAT/participant
2. Included in a valid Maintenance and Support Agreement

Introduction and Experience of SIGMASOFT®

Date: 24th, March / 22nd, September

About the course:

During the workshop participants get an introduction to SIGMASOFT®. It is possible to practically operate SIGMASOFT®, learn about the software interface, mesh generation, and process parameter settings. By simulation projects, result interpretation, and the use of DoE for optimization, participants can experience the power of SIGMASOFT®.

Stress Module Coaching

Date: 30th, June

About the course:

This workshop will focus on how to predict and improve product deformation with the help of SIGMASOFT® Stress Module. SIGMASOFT® experts will analyze various stress problems from product development and design to manufacturing. By working with practical cases, the product design will be improved to achieve superior product quality with regard to contact, ejection, and residual stress.

Virtual Design of Experiments and Optimization

Date: 22nd, December

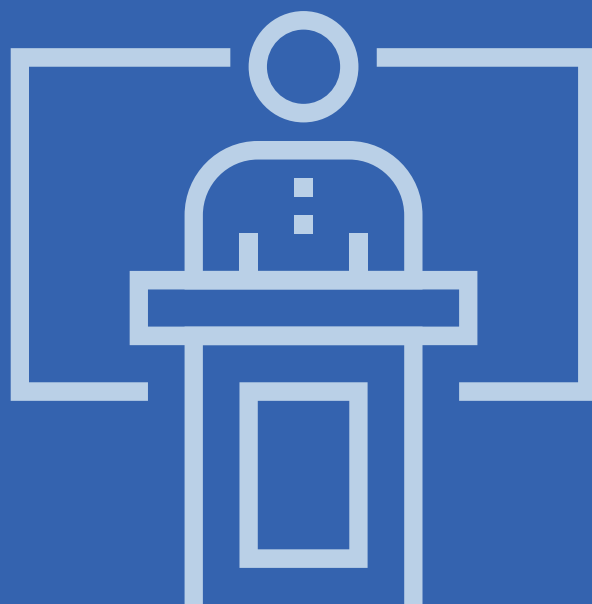
About the course:

This workshop will focus on the theoretical basis and practical methods of DoE & optimization in SIGMASOFT®. Both of these powerful functions will be applied to real practical cases. DoE & optimization is not only an extension of SIGMASOFT® injection molding technology but also a breakthrough advantage that distinguishes it from other injection molding software.

Who should attend:

- SIGMASOFT® users (Priority)
- Engineers, designers, technicians and other injection molding related personnel





研讨会
SEMINARS

研讨会



产品的持续改进及模拟优化

条 件：无
级 别：高级
为 期：1天
模 块：热塑性材料
弹性体材料

费 用：1. 5000RMB+6%VAT/人
2. 免费(在有效维保期内用户)

课程介绍：

该研讨会通过客户与 SIGMASOFT® 技术专家的介绍与展示，专注于 SIGMASOFT® 软件功能在各种注射成型工艺中的实际应用，结合案例分析与模拟结果分析和解读，明确产品缺陷生成的根本原因，优化设计、工艺及生产，进而降低成本，提升产品质量。

课程大纲：

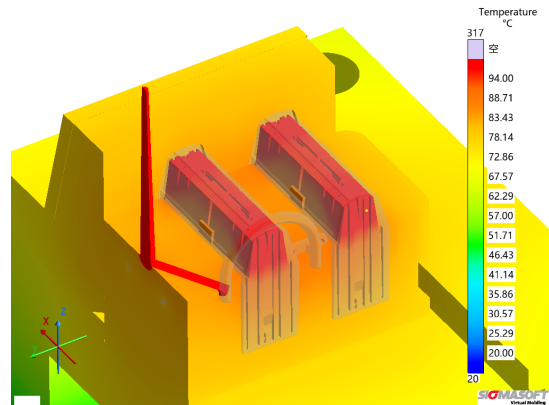
- 模拟结果解读
- 产品缺陷解析
- 工艺变量分析
- 实际案例讲解

课程目标：

- 参加者能加深对 SIGMASOFT® 软件模拟结果的理解，明确并深层次的理解产品缺陷
- 最终提高产品质量，减少各项成本

参加对象：

- SIGMASOFT® 用户
- 工程师，设计师，技术员等注射成型的工作人员



Continuous Improvement and Simulation Optimization of Parts

Prerequisites: None

Course Level: Advanced

Duration : 1 day

Modules : Thermoplast
Elastomer

Course Fee : 1. 5000RMB+6%VAT/participant
2. Included in a valid Maintenance and Support Agreement

About the course:

This seminar will focus on the practical application of SIGMASOFT® functions in various injection molding processes through presentations and demonstrations by customers and SIGMASOFT® technical experts, combined with case studies and simulation result analysis and interpretation. During the seminar not only the root causes of product defects and how to achieve improved product and process design, but also the SIGMASOFT® methodology to reduce costs while maintaining the product quality will be presented.

Course Overview :

- Interpretation of simulation results
- Analysis of part defects
- Explanation of process variables
- Case studies

By the end of this session the participant should be able to :

- Have a deep understanding of SIGMASOFT® simulation results and the part defects
- Control process variables for improved efficiency, quality and reduced cost at their facility

Who should attend:

- SIGMASOFT® users
- Engineers, designers, technicians and other injection molding related personnel



客户定制课程 为贵公司量身定做的专有技术

最好的新知识和技能的传授可以通过一个专门为贵公司设计的培训、辅导或研讨会来实现。我们的专业知识和专业组织以及贵司员工的积极交流是活动成功的有力保障。通过整合公司的所有相关部门，贵司可以实现更高效的沟通，并受益于由此产生的协同效应。让您的团队精诚合作，节省时间和成本，共同面对各项挑战！

根据您的需求，我们可以定制一个新的课程，并为您的员工持续提升制定合适的计划。我们迈格码培训学院将与您密切合作，建立实际案例课程，以便可以立即应用到实际工作生产中。

据调查结果显示，在参加定制课程后，其客户业绩、工作绩效、学习效率、投资回报率等均得到显著提高。

我们很乐意为您提供满足贵司需求的各项定制活动。



Tailor-Made Know-How for Your Company

The best possible transfer of new knowledge and skills can be achieved through a course tailored to your company. The exchange between your employees, the know-how of our experts, and a professional organization guarantee you a successful course. By integrating all relevant departments of your company, you achieve more efficient communication among each other and use the synergy effects that arise. Give your team the chance to master individual challenges together and save time and costs!

Based on your demands, we customize a new course to your needs and create just the right program for your staffs' continuous improvement. Our MAGMAcademy team will work closely with you to create courses that provide practical examples which can be immediately applied to the participant's actual work environment.

Participant survey results showed that performance outcomes, job performance, learning effectiveness, ROI, etc. improved significantly upon delivery of customized courses.

We would be pleased to offer you courses that are individually tailored to your needs, also as an on-site event.



2023 年培训学院年历

MAGMAacademy Calendar 2023 — SIGMASOFT®

月份 Month	周 Week	培训课 Training			讲习班 Workshop	研讨会 Seminar
		操作培训 Operation Training	工艺辅导 Process Coaching			
		热塑性材料 & 弹性体材料 / Thermoplast & Elastomer	热塑性材料 / Thermoplast	弹性体材料 / Elastomer		
一月 Jan.	1					
	2	10~12				
	3		17~19			
	4					
二月 Feb.	5					
	6	7~9		21~23		
	7					
三月 Mar.	8					
	9					
	10					
	11	14~16				
	12		21~23		24 / 软件应用	
四月 Apr.	13					
	14					
	15	11~13				
	16					
五月 May.	17			25~27		
	18					
	19	9~11				
	20					
	21		23~25			
六月 Jun.	22					
	23					
	24	13~15				
	25					
	26			27~29	30 / 应力模块	

2023 年培训学院年历

MAGMAacademy Calendar 2023 — SIGMASOFT®

月份 Month	周 Week	培训课 Training			讲习班 Workshop	研讨会 Seminar
		操作培训 Operation Training	工艺辅导 Process Coaching			
		热塑性材料 & 弹性体材料 / Thermoplast & Elastomer	热塑性材料 / Thermoplast	弹性体材料 / Elastomer		
七月 Jul.	27					
	28					
	29	18~20				
	30		25~27			
八月 Aug.	31					
	32	8~10				
	33					
	34			22~24		
九月 Sept.	35					
	36					
	37	12~14				
	38		19~21		22 / 软件应用	
十月 Oct.	39					
	40					
	41					
	42	17~19				
十一月 Nov.	43			24~26		
	44					
	45					
	46	14~16				
	47		21~23			
十二月 Dec.	48					
	49					8
	50					
	51	19~21			22 / DoE & 自主优化	
	52			26~28		



迈格码（苏州）软件科技有限公司

地址：苏州市工业园区苏惠路98号国检大厦15层1515室

邮编：215021

联系人：培训经理 豆子春

电话：+86 512 6272 8319

邮箱：academy@sigmasoft.com.cn

MAGMA Engineering (Suzhou) Co., Ltd

Room 1515 CIQ Tower

No 98 Suhui Road, Suzhou Industrial Park

Jiangsu Province, China 215021

Contact: MAGMAacademy Manager Sunny Dou

Tel: +86 512 6272 8319

Email: academy@sigmasoft.com.cn

